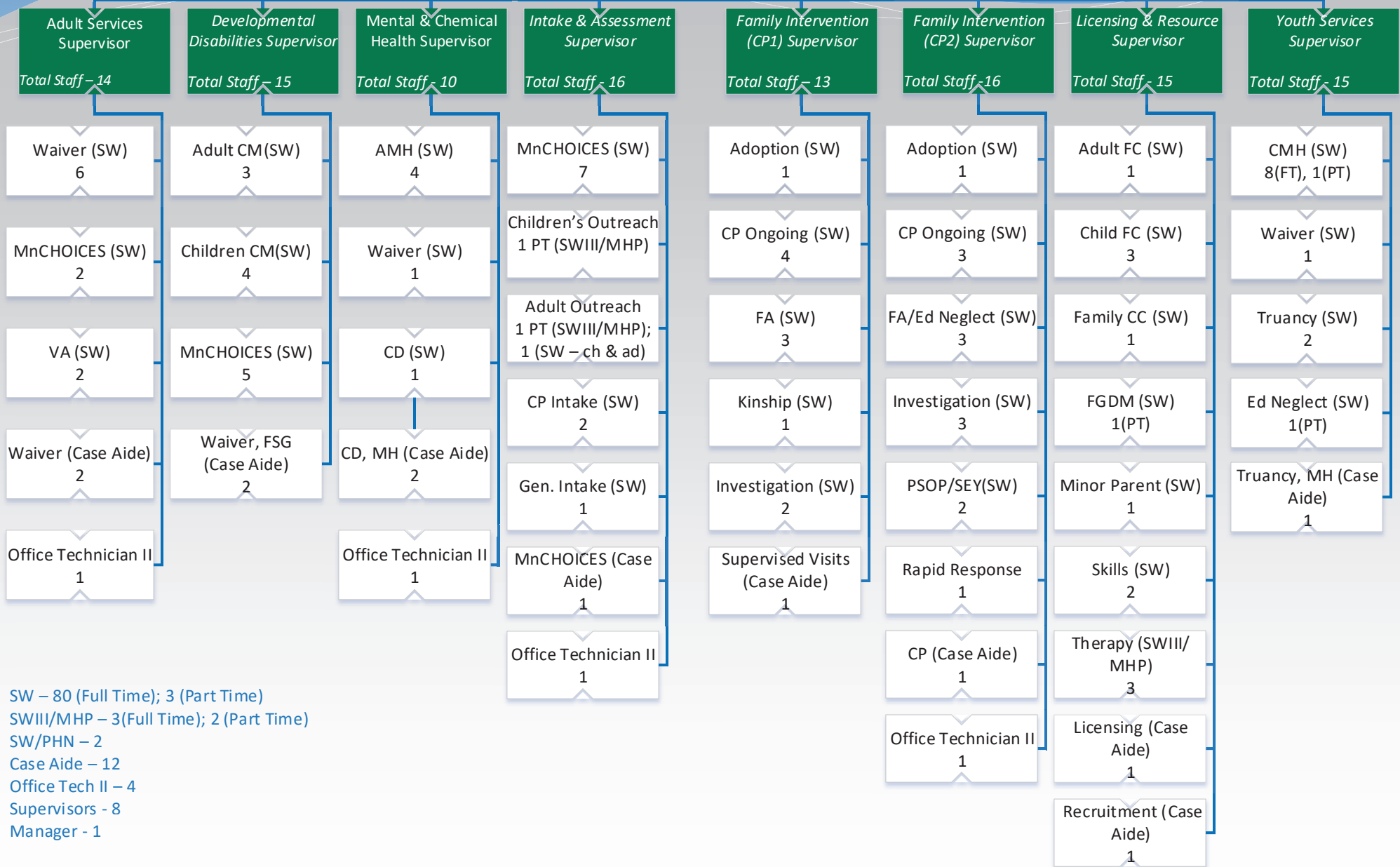


Social Services

Social Services Manager



Total Employees - 115
110 (Full Time); 5 (Part Time)



SW - 80 (Full Time); 3 (Part Time)
 SWIII/MHP - 3(Full Time); 2 (Part Time)
 SW/PHN - 2
 Case Aide - 12
 Office Tech II - 4
 Supervisors - 8
 Manager - 1

REVISED
 12/18/18 (nmb7429)