

# Agency Director

## Health & Human Services

Total Employees ~ 239  
 227(Full Time)  
 [20+, 40< hrs./week] 12(Part Time)  
 Total Contracted - 4

Administrative Specialist

**Fiscal, Technology & Support Business Manager**  
 Total Staff - 28 FT

**Fiscal Supervisor**  
 Total Staff - 11

- 1 Fiscal Officer
- 4 Collections Officer
- 3 Accounting Clerk
- 2 Accounting Tech

**Office Manager II**  
 Total Staff - 9

- 5 Office Technician I
- 3 Office Technician II

**Technology Supervisor**  
 Total Staff - 7

- 1 Technology Coordinator
- 5 Info. Systems Specialist

**Financial Services Manager**  
 Total Staff - 59 FT, 3 C

**Adult & Family Financial, OT Supervisor**  
 Total Staff - 14

- 9 Financial Worker
- 1 Case Aide
- 3 Office Technician II

**Adult & Family Financial, LTC Supervisor**  
 Total Staff - 13; 3 contracted

- 1 Lead Eligibility Specialist
- 11 Financial Worker
- 3 Fraud Investigator (contracted)

**Health Care Supervisor**  
 Total Staff - 13

- 1 Lead Eligibility Specialist
- 11 Financial Worker

**Child Support Supervisor A-K**  
 Total Staff - 9

- 4 Child Support Officer
- 2 CS Hearing Officer
- 1 Case Aide
- 1 Office Tech II

**Child Support L-Z Supervisor**  
 Total Staff - 9

- 6 Child Support Officer
- 2 CS Hearing Officer

**Public Health Director**  
 Total Staff - 28 FT, 7 PT, 1 C

**Community Health Supervisor**  
 Total Staff - 10

- 4(FT), 1(.9PT), 2(.8PT), 1(.6PT) PHN
- 1 Office Technician II

**Family Health Supervisor**  
 Total Staff - 12

- 4(FT), 1(.9PT), 1(.8PT) PHN
- 5 Case Aide

**Health Promotion Supervisor**  
 Total Staff - 12

- 3(FT), 1(.5PT) HP Coordinator
- 1 Emergency Preparedness Coordinator
- 3 PHN
- 1 RN(Contracted)
- 2 Case Aide

1 Public Health Planner

**Social Services Manager**  
 Total Staff - 110 FT, 5 PT

**Adult Services Supervisor**  
 Total Staff - 14

- 10 Social Worker
- 2 Case Aide
- 1 Office Technician II

**Mental & Chemical Health Supervisor**  
 Total Staff - 10

- 6 Social Worker
- 2 Case Aide
- 1 Office Technician II

**Family Intervention (CP1) Supervisor**  
 Total Staff - 13

- 11 Social Worker
- 1 Case Aide

**Intake & Assessment Supervisor**  
 Total Staff - 16

- 9 Social Worker
- 2 SW PHN
- 2 (.5PT) SWIII/MHP
- 1 Case Aide
- 1 Office Technician II

**Developmental Disabilities Supervisor**  
 Total Staff - 15

- 11 Social Worker
- 2 Case Aide

**Youth Services Supervisor**  
 Total Staff - 15

- 11(FT), 2(.5PT) Social Worker
- 1 Case Aide

**Family Intervention (CP2) Supervisor**  
 Total Staff - 16

- 13 Social Worker
- 1 Case Aide
- 1 Office Technician II

**Licensing & Resource Supervisor**  
 Total Staff - 15

- 8(FT), 1(.5PT) Social Worker
- 3 SWIII/MHP
- 2 Case Aide

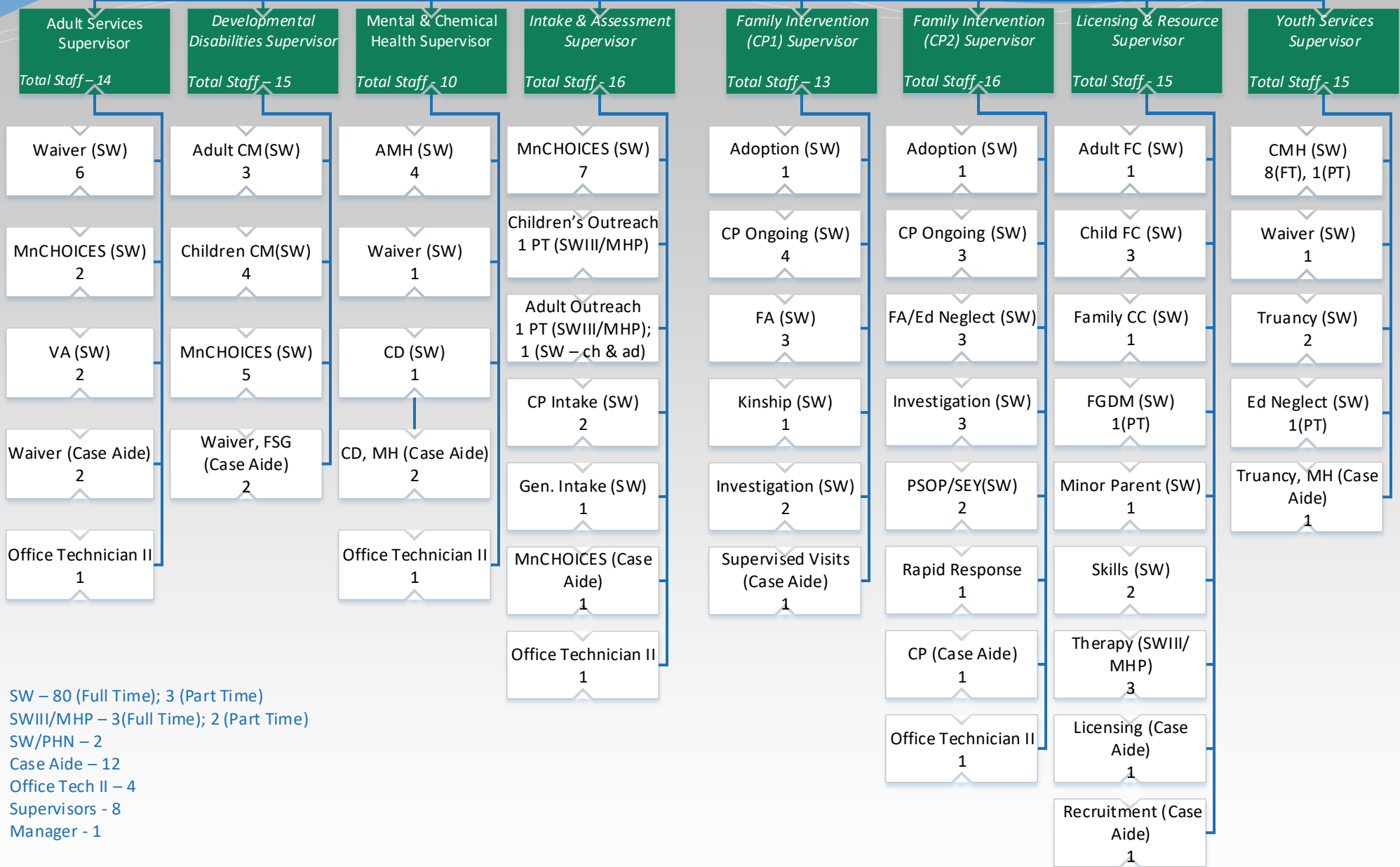
REVISED  
 12/18/18 (nmb7429)

# Social Services

## Social Services Manager

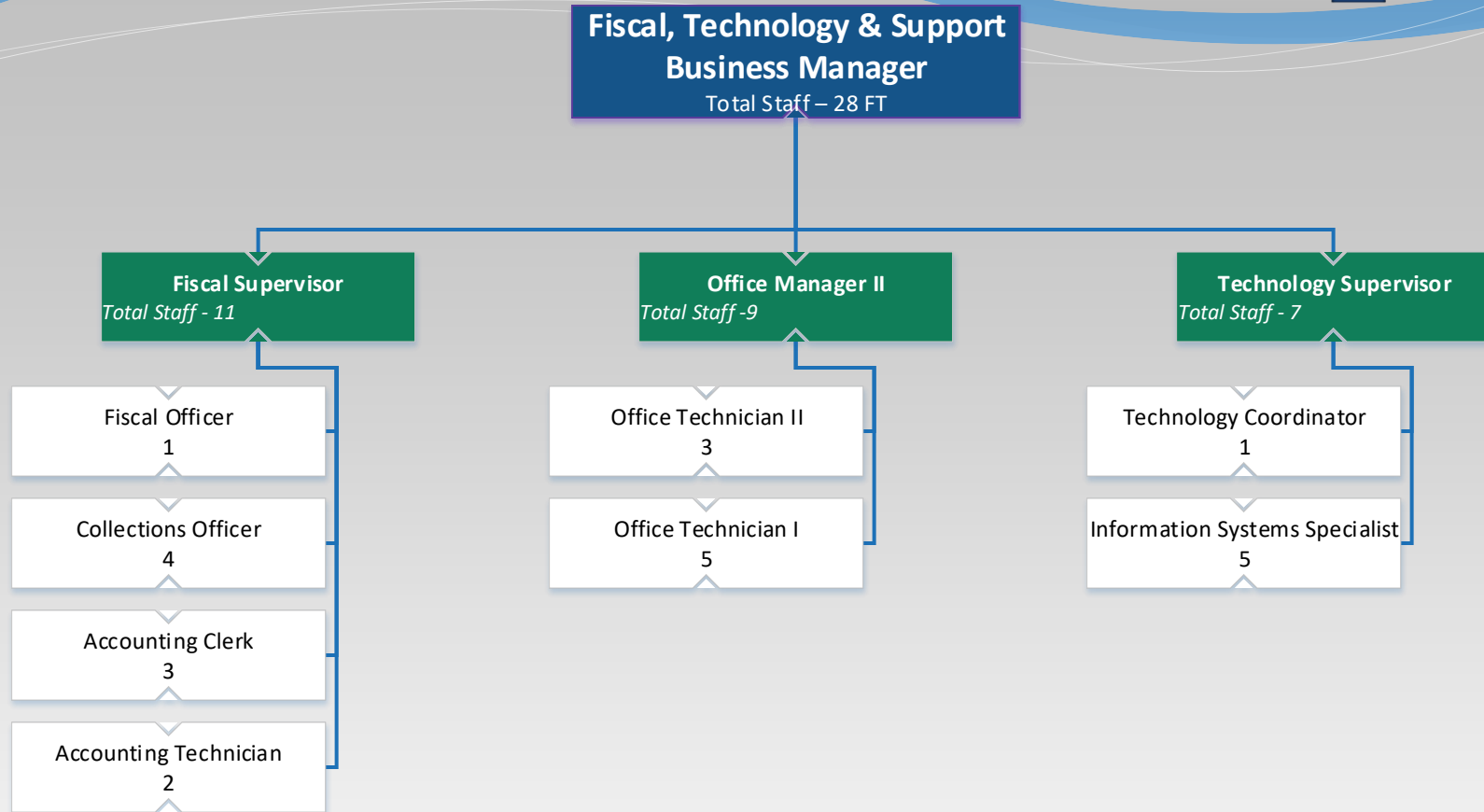


Total Employees ~ 115  
110 (Full Time); 5 (Part Time)



SW – 80 (Full Time); 3 (Part Time)  
 SWIII/MHP – 3(Full Time); 2 (Part Time)  
 SW/PHN – 2  
 Case Aide – 12  
 Office Tech II – 4  
 Supervisors - 8  
 Manager - 1

REVISED  
12/18/18 (nmb7429)



- Fiscal Officer – 1
- Collections Officer - 4
- Accounting Clerk – 3
- Accounting Technician – 2
- Tech. Coordinator – 1
- Information System Specialist – 5
- Office Technician II – 3
- Office Technician I - 5
- Supervisor – 3
- Manager - 1

REVISED  
11/26/18 (nmb7429)

# Financial Services

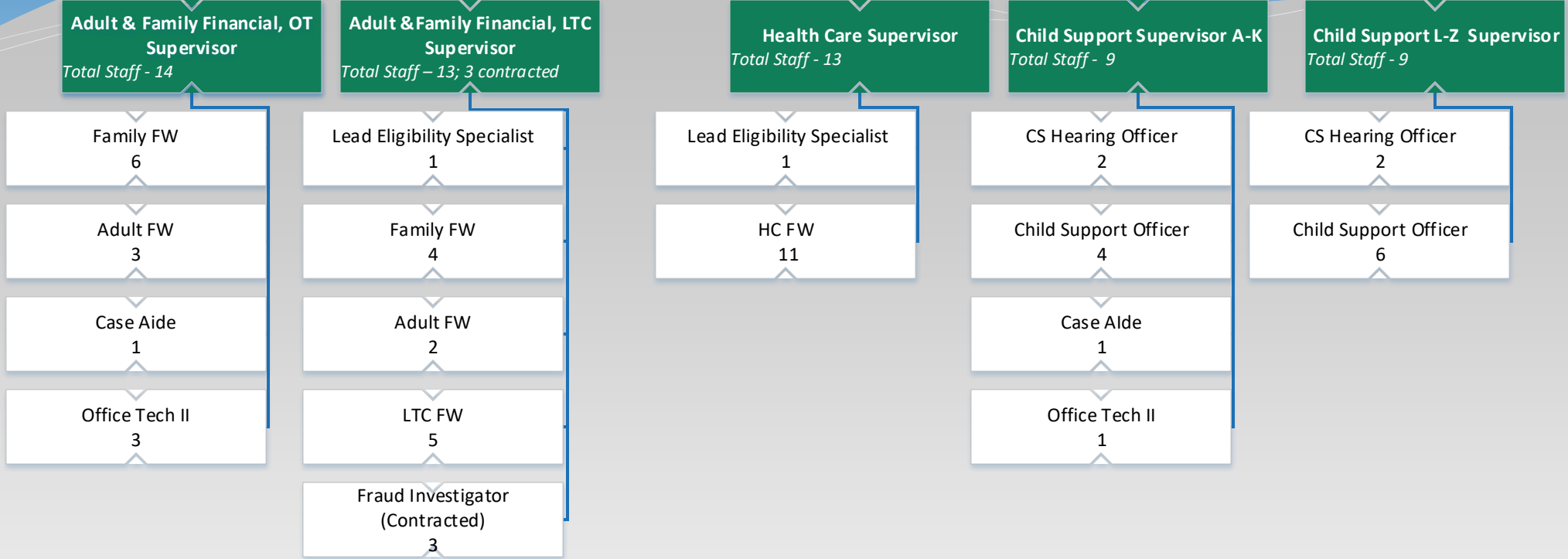
## Financial Services Manager

Total Staff – 59 FT, 3 C



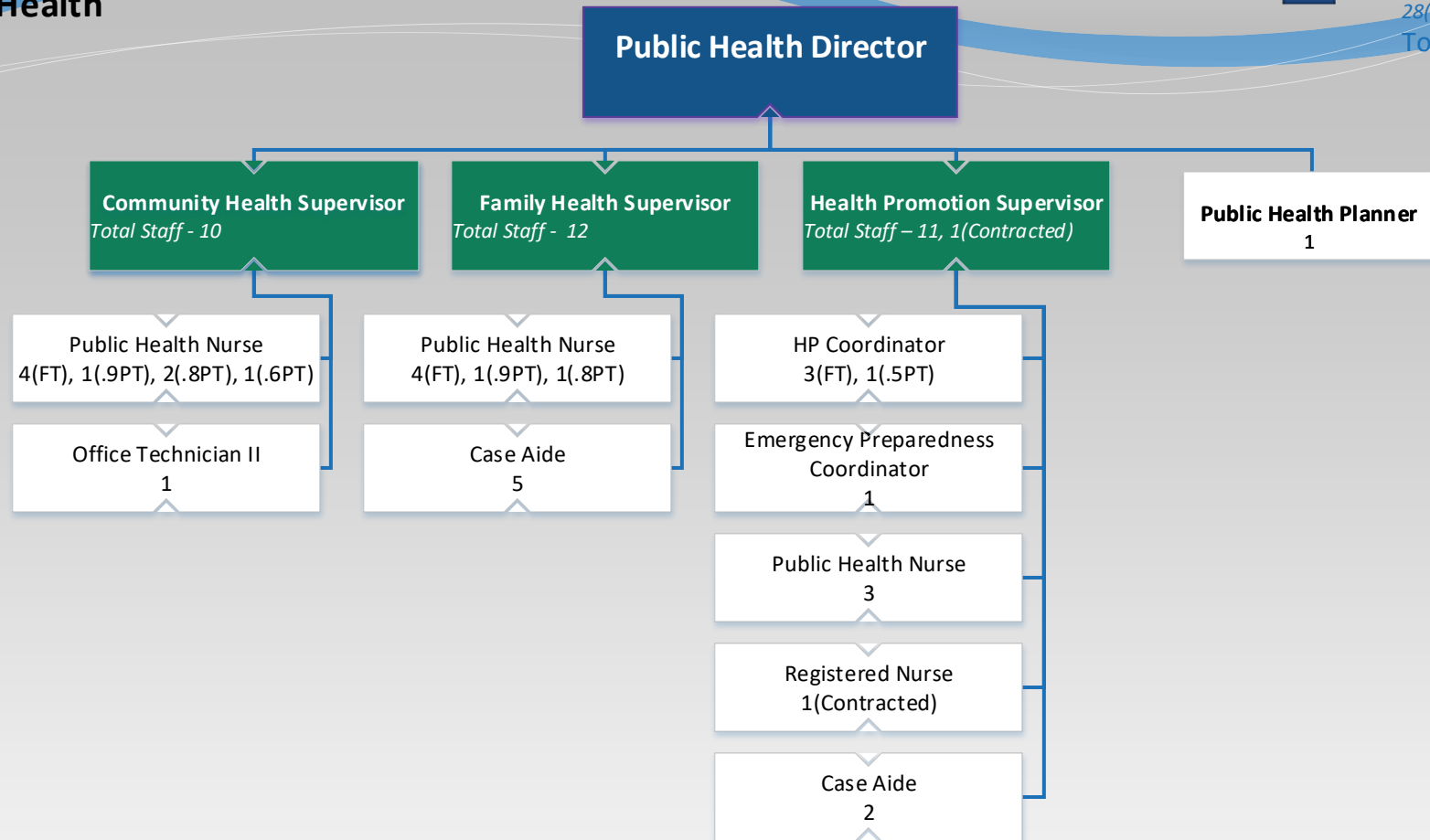
Total Employees – 59(Full Time)

Total Contracted - 3



- Lead Elig. Specialist- 2
- Financial Worker – 31
- Child Support Officer – 10
- Child Support Hearing Officer - 4
- Case aide – 2
- Office Tech II – 4
- Supervisor – 5
- Manager - 1

REVISED  
12/18/18 (nmb7429)



PHN – 11 (Full Time); 6 (Part Time)  
PH Planner - 1  
HP -Coordinator – 3 (Full Time; 1 (Part Time)  
Emer. Prepared Coordinator – 1  
Case Aide – 7  
Office Tech II – 1  
Supervisor – 3  
Director - 1

REVISED  
03/26/18 (nmb7429)